

[For Rosslare tidal info click here](#)

[For Wexford weather click here](#)

**The 2011 race will keep the same course as 2010**

## **Race Notes Course A**

### **Waypoint Total Dist Interval Bearing from Position**

Lagoon Start 0 m N52 15.173 W6 21.087

Kelly's Port 3.1 km 3.1 km 319° true N52 16.437 W6 22.860

Port 4 8.4 km 5.3 km 17° true N52 19.163 W6 21.491

Port 6 9.5 km 1.1 km 315° true N52 19.577 W6 22.178



Port 10 11.0 km 1.5 km 305° true N52 20.054 W6 23.291

Port 12 11.7 km 643 m 293° true N52 20.189 W6 23.813

Port 14 12.2 km 515 m 239° true N52 20.045 W6 24.202

Port 16 12.7 km 546 m 231° true N52 19.858 W6 24.574

Port 18 13.4 km 700 m 283° true N52 19.941 W6 25.177

Port 20 13.8 km 385 m 245° true N52 19.854 W6 25.485

Port 22 14.1 km 283 m 278° true N52 19.874 W6 25.733

Port 24 14.7 km 637 m 293° true N52 20.008 W6 26.250

Port 26 15.4 km 632 m 288° true N52 20.115 W6 26.779

Port 28 16.1 km 740 m 290° true N52 20.250 W6 27.393

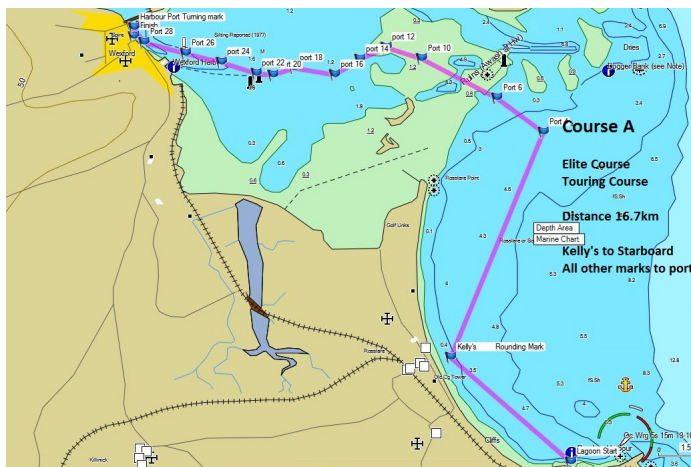
Harbour 16.5 km 371 m 333° true N52 20.428 W6 27.543



Finish 16.7 km 196 m 180° true N52 20.322 W6 27.544

Please note that No's 4 to 28 are the port channel marks. [For wexford Harbour Boat Club's detailed channel chart click here](#)

All starboard channel marks must be left to starboard.





### Race Notes Course B

WayPoint Distance From Last Bearing Position

Start/finish 0 m N52 20.322 W6 27.544

Harbour Turning mark 196 m 196 m 0° true N52 20.428 W6 27.543

Port 28 567 m 371 m 153° true N52 20.250 W6 27.393

Port 22 2.6 km 2.0 km 110° true N52 19.874 W6 25.733

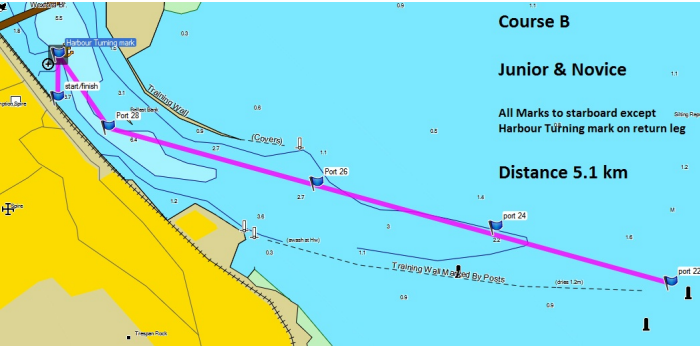
Port 28 4.6 km 2.0 km 290° true N52 20.250 W6 27.393

Harbour Turning mark 5.0 km 371 m 333° true N52 20.428 W6 27.543

Start/finish 5.1 km 196 m 180° true N52 20.322 W6 27.544



All marks to starboard except harbour turning mark to port on return leg



Race Notes Course C

WayPoint Distance From Last Bearing Position



Start/finish 0 m N52 20.322 W6 27.544

Harbour Turning mark 196 m 196 m 0° true N52 20.428 W6 27.543

Sailing Club Mark 1.5 km 1.3 km 316° true N52 20.935 W6 28.352

Port 28 3.2 km 1.7 km 139° true N52 20.250 W6 27.393

Port 26 3.9 km 740 m 110° true N52 20.115 W6 26.779

Sailing Club Mark 6.3 km 2.3 km 310° true N52 20.935 W6 28.352

Port 28 7.9 km 1.7 km 139° true N52 20.250 W6 27.393

Port 26 8.7 km 740 m 110° true N52 20.115 W6 26.779

Harbour Turning mark 9.7 km 1.0 km 304° true N52 20.428 W6 27.543

Start/finish 9.9 km 196 m 180° true N52 20.322 W6 27.544



All Marks to Port

Elite & Touring 2 laps as listed

Novice & Junior 1 lap



***[Click here to view larger image >>](#)***



